



# News and Views

Myrtle Trace

A Newsletter by Myrtle Trace Residents for Myrtle Trace Residents Feb. 2010

## BOARD BRIEFS

### ANNUAL MEETING

The MTHOA Annual Meeting will convene on Saturday, February 13<sup>th</sup> at 2 pm in the Burroughs and Chapin Auditorium on the Horry Georgetown campus. Information packets have been distributed to all homeowners. If you have NOT received a package of materials please contact Sheilah Reynolds at 347-0787. Packets will not be available on the day of the meeting.

Registration for the meeting and distribution of ballots to elect two new people to serve on the Board of Directors will commence at 1PM in the auditorium lobby. If you will be voting proxies at the meeting, you are encouraged to pre-register at the Clubhouse on Friday afternoon, February 12<sup>th</sup> between 4 pm and 6 pm. When you register on Saturday, you will receive your ballot along with the ballots for which you had proxies all in one package.

Please plan to attend the meeting OR give your proxy to someone who will attend the meeting so we can be assured of the required quorum for the meeting.

### INFRASTRUCTURE PROBLEM

The Myrtle Trace subdivision was started in 1983. This means most of the infrastructure, underground utilities, sewers and drain pipes have been in use for 20 years or more. The outlet for Lake Grebe has consisted of a 36" diameter concrete reinforced pipe under the street to a catch basin and a 24" diameter corrugated metal pipe about 150 feet long emptying into the County ditch. The pipe passes under the roadway and a small park between 154 and 156 Myrtle Trace Drive. Unfortunately, the 24" pipe has ruptured and it has resulted in the creation of a small but growing sinkhole in the park and erosion at the entrance to the ditch. The Property Committee is working with a contractor to replace the pipe with a 24" concrete reinforced pipe at an estimated cost of around \$12,500. It is expected that the repairs will be completed within a few weeks.

### MYRTLE TRACE HISTORY

Myrtle Trace is over 26 years old and many of our earliest residents are no longer with us. There has never been a history of this wonderful community compiled and the Board would like to explore the possibility of collecting stories, anecdotes, photos, etc. which might be appropriate to tell the story of the "early days" of Myrtle Trace as seen through the eyes of its residents. Before many more of the early residents are gone, let's go into our memory banks and see if we can accumulate some interesting material for inclusion in a community history. Please send your inputs to Cathy McElroy (347-5360) or Ted Ackley (347-3004) or use their published e-mail addresses.

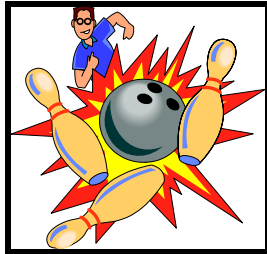
### TRAFFIC CONTROL

With our gates working well, Myrtle Trace Drive has become a much busier thoroughfare. As a result, it is more important than ever that our drivers observe the speed limit (25 MPH) and obey the stop signs. While a vast majority of our residents are very conscientious, we do have some who tend to ignore the rules. The four-way stop at Myrtle Trace Drive and Cedar Ridge Lane is now very busy and the stop signs there should be obeyed. Those signs are not "stoptional" !!

## News & Views

Editor

Ted Ackley 347-3004  
March Deadline - 2/19/10



### MYRTLE TRACE BOWLING

The second half of the season is underway with four teams battling for the top spot. The Silver Foxes (Steve Sands, Janet McGrady & Joe Paglierani) are tied with the Crackerjacks (Andy Lindh, Rob Macker & Jack Peachey) with 17 points each. The High Rollers (Millie Van Slaars, Ken Van Slaars & Ted Ackley) are three points back along with the Hot Shots (Pat Fisher, Tom Gayer & Charlie Conklin).

High scores during January have been rolled by Barry Moore (212,592), Tom Marek (234,566), George Thompson (220, 556), Jim Sanders (546), Dan Hayes (212,544), Ted Ackley (538), Therese Moore (215,560) and Millie Van Slaars (198,529).

The high average leaders are Barry Moore (169), Jerry Campbell (166.69), Ted Ackley (166.50), Therese Moore (156), Yvette Campbell (151) and Francine Charming (147).

MYRTLE TRACE WEBSITE  
[www.myrtletracesc.org](http://www.myrtletracesc.org)

## ACTIVITIES COMMITTEE

Chairman Dick Sievers presided over the Activities Committee meeting on January 4th with 14 persons attending. Committee reports were given and we were all pleased with the past years' events and participation. 2010 promises to be every bit as exciting.

Approximately 45 persons attended Bingo on January 8th. Phase 7 & 8 were hostesses for the Coffee Klatch on January 15th and more than 60 Myrtle Trace ladies attended. The Breakfast on Pear Tree Circle was enjoyed by about 90 residents, some of whom even ate **GRITS**. A special thank you goes to Charlene Rose for all her work. Our new round tables and enthusiastic chairpersons, Terry and Rob Macker, have boosted attendance at Pot Luck, as evidenced on the 19th. After enjoying all the delicious dishes prepared by our neighbors, Steve Sands entertained us with old Jack Benny T.V. shows. There was good attendance and everyone seemed to enjoy Movie Night on January 22nd.

February's computer class on Monday night, the 1st at 7:00 PM. will be a question and answer session. The response for the Myrtle Trace Community Chorus has been fantastic, with over 40 residents signing up. Temporary plans are to gather for singing on the 2nd and 4th Thursdays of each month from 4:00 - 5:30 PM at the Clubhouse. Bingo for February will be on the 12th at 7:00 PM. A "Hearts and Flowers" dinner is planned for Valentines Day, February 14th, at 5:30. Use the sign-up sheet in this issue to make your reservations. The February movie on the 26th at 7:00 PM will be "New in Town" (\*\*\*PG), a light-hearted comedy starring Renee Zellweger and Harry Connick, Jr. Free popcorn and soft drinks are courtesy of your Activities Committee. Check the calendar for other regularly scheduled events.

Don't forget to save your old "junk/treasures" for our Myrtle Trace charity yard sale coming up on March 20th....(more details will follow). The next Activities Committee meeting will be February 8th at 7:00 PM. As always, we invite new members with fresh new ideas to join us.

*Suzanne Owens*

## MYRTLE TRACE COMMUNITY DIRECTORY

ADDITIONS / CORRECTIONS / DELETIONS  
JANUARY 23, 2009

Additions:

LaGrand, John & Nancy                      107 Ashwood Circle                      347-5494 IA

Corrections:

NONE

E-Mail:

Gascoigne, Diane  
Gascoigne, Bill  
Owens, Suzanne

deeatthebeach@scoast.net  
billg39@scoast.net  
suzieq42@scoast.net



## GARDEN CLUB

As mentioned in the January News & Views, the Garden Club will resume regular monthly meetings on March 4<sup>th</sup> and the Plant Problem Clinic will be featured at this meeting. Until then, our activities shall be centered around maintaining the appearance of the garden; this means that we will be asking for some additional help from our hard-working Tracers who wish to participate in garden activities. And, as is our usual practice, we will continue to meet (weather permitting) on Saturday mornings at 9 am to do a general clean-up of the garden. Just an hour or so of your time will go a long way toward keeping the garden in tip-top shape and we thank you in advance for your help.

“Where flowers bloom so does hope.” Lady Bird Johnson

*Paul Alexander*

---

## YOUR HELP IS NEEDED

Sacred Vision Animal Sanctuary is an animal sanctuary just off SC544 on Forestbrook Road in the Socastee area in need of your HELP. Founded and directed by Liz Owen, it has been inundated by over 300 cats which have been abandoned for various reasons. This is more than double the population normally kept for adoption. It is a “no kill” animal rescue organization which receives no “stimulus” money and is solely dependent on private donations of money, cat supplies, time and items for resale in their thrift shop. Lynn and I have been donating our time and money to Sacred Vision Animal Sanctuary and we urge any of you who are able to consider helping this worthy organization. Consider adopting a cat or donating time or money and give Liz a call at 251-7729. If you have any questions please call us at 347-0007.

*Lynn & Dick Collett*

---

## I REMEMBER THAT !!!

The January trivia winner was Jim Lannoo whose name was randomly drawn from the list of residents who submitted the correct answer. The question was: What cereal was “Shot From Guns”?

The answer: Quaker Oats

Here is the question for February:

Whose motto was “Have Gun, Will Travel” ?

Send your answers to Steve Sands by phone (331-3180) or by e-mail (SSands3@sc.rr.com) by the deadline February 15th. The prize this month will be a \$5.00 gift certificate at The Sandwich Club. The winner will be announced in the March issue of News & Views.

## *Thank You*

Dear Myrtle Tracers,

Your outpouring of support, kindnesses and sympathy before and after my husband Bill’s passing is overwhelming. This is truly a unique community and as someone once said “Heaven on earth!” There are no words that can ever say enough to express my sincere appreciation to all. As one of my neighbors would say, “Hugs and kisses to you all”. See ya around.

*Charlene Rose*

We would like everyone to know that we recovered our cat on January 12th. We would like to thank everyone who called and tried to help us find him.

*Edie & Randy Burgess*

## HOSPICE CHILDREN’S COLLECTION

On behalf of the Activities Committee and myself, I would like to thank everyone that donated to the Christmas collection. I collected \$840 from 40 residents, \$44 from the Christmas Coffee, \$10 from the Duplicate Bridge kitty, for a total of \$890. I also received 2 beautiful throws, toys, a handmade tutu for one of the girls, and wrapping paper and boxes. All was greatly appreciated. We had fourteen children ages 3 months to 16 years. Each child received clothing, toys and the older boy received a gift card. I want to thank Alice Landry and Janet McGrady for helping me shop and wrap all the presents. Hospice was very grateful for the generosity of the residents of Myrtle Trace and want us to know we made fourteen children and their families very happy.

*Lynn Peachey*

# MYRTLE TRACE-MART

## I WOULD LIKE TO.....

**SELL** - Stone patio set including a 25" dia. round pedestal table and two (2) 14" X 36" benches with inlaid tops. Set for \$125.00. Two (2) like new hose reels - \$25.00 for both. Please call Joan at 236-6689. (12)

**RENT** - To own. 2 B/R, 2 bath, one car garage on Lake Bunting. Built in book shelves, casement windows, tiled patio. Please call 234-0105. (12)

**SELL** - Upright Frigidaire freezer. Commercial grade - four shelves. Please call 234-0105. (12)

**SELL** - Proform Cross Walk treadmill with incline. Incl. Users manual and DVD. Asking \$125.00. Schwinn AirDyne exercise bike. \$35.00. Please call Charlene at 234-1730. (12)

**SELL** - Ladies Sun Retro bicycle w/basket. Excellent condition. \$100.00 Please call Peter at 234-2315 (12)

**SELL** - Hewlett Packard printer Model 8426. \$30.00. Please call Bill at 347-0842. (12)

**SELL** - Component stereo system consisting of Realistic stereo receiver, CA 2 speed turntable, SONY double tape recorder, Paradigm speakers & David Clark headphones. \$25.00 Call Bill at 347-0842. (12)

**SELL** - Epson Stylus Photo R200 color printer - \$30.00. Wireless network card for a laptop - \$10.00 Please call Steve at 331-3180. (12)

**SELL** - Three (3) new Lexmark ink cartridges—2 black, 1 color. Cost \$65.00. \$25.00 gets all three. Please call Ken at 347-6023. (1)

**SELL** - Heatmaster Gas Log room heater with remote. No vent required. Rarely used. \$200.00. Three (3) white ceiling fans. \$20.00 each for two of them. \$25.00 for one with brass trim. Three (3) medallions \$5.00 each. Please call Lois at 234-1350. (1)

**SELL** - Fairly new 24" woman's bike. Ridden three times. \$35.00. Outdoor patio furniture covers. Used one season. Please call for details. 234-1499. (1)

**SELL** - ACTIVcycle exercise machine - portable pedal exerciser for lower and upper body conditioning. Never used. \$100. Please call Gloria at 843-347-5564 or 843-246-2087. (1)

**GIVE AWAY** - Maple end table. Please call Cathy or Frank at 347-5360. (2)

**BUY** - An older model used car in really good condition even though it may have high mileage. Please call Joanna at 234-2161. (2)

**SELL** - Two tickets to the "Celtic Woman" concert in Greenville on February 14th. Excellent seats (Section 102, Row AA). Treat your special someone to a special treat on Valentine's Day. Please call Chuck at 347-9165 or 843-424-9583. (2)

**SELL** - Ladies in-line roller blades and knee pads. Size 7. \$50.00. Please call Debi at 843-333-5364 (weekdays) or 347-9165 (evenings). (2)

**SELL** - Golf cart cover; heavy duty; great condition. \$40.00. Please call Chuck at 347-9165. (2)

### Myrtle Trace Ladies Coffee Klatch

Saturday

February 20, 2010

10 - 12 noon at the Clubhouse

Please RSVP to  
Joyce Remaly  
at 234-1157

Please wear name badge, bring non-  
perishable food goods for CAPS

## **BOARD BRIEFS (CONT'D.)**

### **VOLUNTEER APPRECIATION RECEPTION**

On January 23<sup>rd</sup>, the Board of Directors had the pleasure of hosting a reception for almost 90 Myrtle Trace volunteers in recognition for their service within Myrtle Trace and throughout Horry County. A highlight of the affair was the announcement that, based on the inputs received, a total of more than 23,000 hours of volunteer service is provided annually. It is conservatively estimated that at least 2,300 additional hours have not been reported. The largest beneficiary of our support is the MTHOA which receives 5,282 hours of effort from its members. Outside of Myrtle Trace, the Conway Medical Center receives 4,916 hours. Area churches and church related agencies collectively receive 6,366 hours each year. Approximately 36 other organizations benefit from the efforts of Myrtle Trace residents.

MTHOA President Tom Gray thanked the volunteers for their unselfish contributions to our subdivision and the surrounding area.

### **CLUBHOUSE ALARM**

Our Clubhouse has an alarm system which is monitored by a security agency to protect us against unlawful entry. The system is armed between the hours of 11 pm and 6 am. Any entry or motion within the building during those "armed" hours results in notification to the security contractor. This, in turn, results in a phone call to the Clubhouse from the contractor to verify that the activity is appropriate. Anyone expecting to be in the Clubhouse during the hours in which the alarm is armed should familiarize themselves with the instructions posted at the alarm control panel on the wall just outside the kitchen door.

### **DINING OUT**

Myrtle Trace Dining Out and Old World Italian Restaurant set a record for "community groups" dining out. On January 21<sup>st</sup> we set a record for the number of Myrtle Tracers dining out in our monthly get-togethers. Even with cancellations, we had a rousing 49 people for dinner at Old World in Murrell's Inlet. George, the owner of Old World Italian, said it was probably the largest community dining group they ever had as well. Everyone had a great time, the food was wonderful and the service excellent. Thanks to all who came and made it such a huge success.

*Diane & Bill Gascoigne*



## ***Pot Luck Dinner***

**MONDAY, FEBRUARY 15, 2010**

**5:30 PM**

**BRING A DISH TO SHARE**

**MEET AND GREET FRIENDS & NEIGHBORS**

**AFTER DINNER ENTERTAINMENT**

***To Be Announced***

# TV Shows from Yesteryear



Milton Berle  
&  
Annie Oakley



Join Steve Sands for a trip down memory lane on Saturday, February, 20th., from 7:00 – 8:30 pm in the Clubhouse while he shows programs from his collection of old TV shows. Admission is free and the Evening promises to be a blast from the past!!!

---

## MOVIE NIGHT AT THE CLUBHOUSE

Friday, February 26<sup>th</sup>  
7:00 PM

“NEW IN TOWN”

starring

Renee Zellweger & Harry Connick, Jr.

COMING MARCH 20, 2010

# GARAGE SALE

To benefit  
MERCY HOSPICE

&

FOSTERING HOPE OF CONWAY



The Activities Committee invites you to donate new or gently used items.

\*No large furniture, books, clothing, or large appliances will be accepted.

**OR**

You may rent a table (\$10) and sell your own items. You keep your profits

If you have questions please call:  
Bonnie Longnecker, chairperson 347-2632,  
Charlene Rose 234-1730, or  
Maureen Lowndes 347-5120



# DINING OUT

## Osaka Buffet

( Highway 501 and Seaboard St. Across from Walmart by Grand Coastal Mall)

Make right off 501 into Mall Entrance.

Turn left to go to Walmart, then make quick left turn for restaurant.

794 Oak Forest La. Myrtle Beach 29577

839-5959

### Feb. 25, 2010

Seating at 5:00 PM.

Their menu is extensive. Price for dinner is \$10.59 per person. This includes:

**BUFFET:** General Tso's Chicken, Honey Chicken, Chicken w. Broccoli, Beef Rib, Grilled Salmon, Grilled Sausage, Butter Shrimp, Clams, Fried Shrimp, Kung Pao Mushroom, Crab Legs, Sesame Chicken, Pepper Beef w. Onion, Grilled White Fish, Grilled Seafood & Crab Meat, Grilled Italian Bread, Chicken Teriyaki, 7 appetizers and more. The food is replenished constantly and served hot.

**HIBATCHI:** (included in the same price) you go up, pick your choice of either the following or all of the following: steak, chicken scallops, salmon or shrimp and vegetables. It is then cooked specifically for you.

**SUSHI BAR:** (and also included) you can choose from a variety of fresh sushi or you can place an order if you'd like something specific. They will then prepare it for you.

**SALAD BAR** plus, there are 3 types of soups: Miso, Hot & Sour & Egg Drop.

**DESSERT TABLE:** featuring Ice Cream, cakes, cookies and melon.



Make checks payable to  
"Myrtle Trace Activities Committee"

Drop check or cash to:

Cathy & Frank McElroy

110 Ashwood Circle 347-5360

Place in brown basket with green shamrock to  
the right of the entrance door.

No later than Feb. 22, 2010

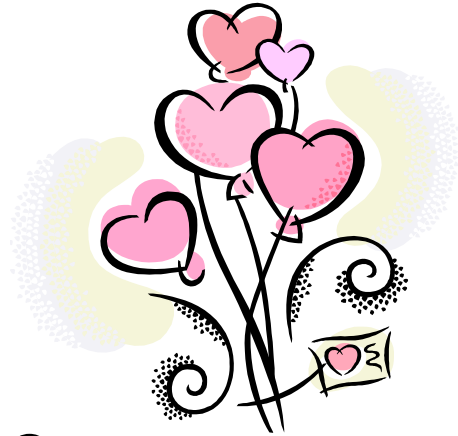
Names: \_\_\_\_\_

Address \_\_\_\_\_

Number: \_\_\_\_\_ X \$ 1.00 = Amount \_\_\_\_\_

Money will be refunded at the restaurant

# Hearts and Flowers At Pear Tree Circle



A Valentine's Day Celebration

Sunday, February 14, 2010  
5:30 PM 'till ????



Spaghetti Dinner by Charlene Rose & Co.

ALSO

**BYOB**

**GAMES** with Joyce Remaly

**DJ** Steve Sands

Request your favorite song

**50-50**

**MAKE YOUR RESERVATION BY  
FEBRUARY 10, 2010  
\$10 PER PERSON**

**SEATING LIMITED TO 60**

Deposit this form and a check made  
out the Myrtle Trace Activities  
Committee to:

Suzanne Owens  
230 Candlewood  
By February 10, 2010

Name: \_\_\_\_\_

No. X \$10.00 = \_\_\_\_\_

Request your favorite song:  
\_\_\_\_\_



# MYRTLE TRACE ACTIVITIES

# February 2010

Sunday	Monday	Tuesday	Wednesday	Thursday	Friday	Saturday
	1 9:30-11 Bible Study 12:30 Mah Jongg 7:00 BEGINNERS COMPUTER .....	2 1:00 Mah Jongg Duplic. Bridge Canasta 6:00 King's Poker 7:00 McNeill's Poker	3 12:30 Bridge (Old Tricks) 6:30 Men's Poker	4 9-11 Crafters 10:00 Bowling 1:30 Scrabble 7:00 MTS MTG	5 9:00 Line Dancing 1:00 Canasta Duplic. Bridge	6 2-10 RSVD
7 7:00 Game Night	8 9:30-11 Bible Study 12:30 Mah Jongg 4:00 ARC MTG. 7:00 ACT. COM.	9 10:00 Prop. Com. 1:00 Mah Jongg Duplic. Bridge Canasta 6:00 King's Poker --- .....	10 9:30 PH. 8 COFFEE 12:00 HG LUNCH 12:30 Bridge (Easy Aces) 6:30 Men's Poker	11 9-11 Crafters 10:00 Bowling 1:30 Scrabble 4-6 MT Choral Grp 6:00 King's Poker --- .....	12 9:00 Line Dancing 1:00 Canasta 4-6 MT PRE- REGISTER 7:00 BINGO	13 2:00 MTHOA ANNUAL MTG. 7:00 Bridge
14 12:00 Set up 5:30 Valentine's Day Party 7:00 Game Night	15 9:30-11 Bible Study 12:30 Mah Jongg 5:30 POT LUCK	16 9:00 MTS Brkfast 1:00 Mah Jongg Duplic. Bridge Canasta 6:00 King's Poker 7:00 McNeill's Poker	17 9:00 MTHOA BD MTG. 12:30 Bridge (Old Tricks) 6:30 Men's Poker	18 9-11 Crafters 10:00 Bowling 1:30 Scrabble 6:00 King's Poker 7:00 Mah Jongg	19 9:00 Line Dancing 1:00 Canasta Duplic. Bridge	20 10-Noon MT LADIES COFFEE 7:00 TV Nostalqia
21 7:00 Game Night	22 9:30-11 Bible Study 12:30 Mah Jongg 4:00 ARC MTG.	23 1:00 Mah Jongg Duplic. Bridge Canasta 3:00 Caregivers Grp 6:00 King's Poker 7:00 McNeill's Poker	24 12:30 Bridge (Easy Aces) 6:30 Men's Poker	25 9-11 Crafters 10:00 Bowling 1:30 Scrabble 4-6 MT Choral Grp 5:00 DINE OUT 6:00 King's Poker 7:00 Mah Jongg	26 9:00 Line Dancing 1:00 Canasta 7:00 MOVIE NITE	27 7:00 Bridge
28 7:00 Game Night		<b>CALENDAR</b> Pat Paxson - 347-1609 Alternate Ted Ackley - 347-3004		<b>EXERCISING - CLUBHOUSE</b> M - F 7:45 - 9:00		<b>OPEN BOWLING</b> Tuesday 9:30